

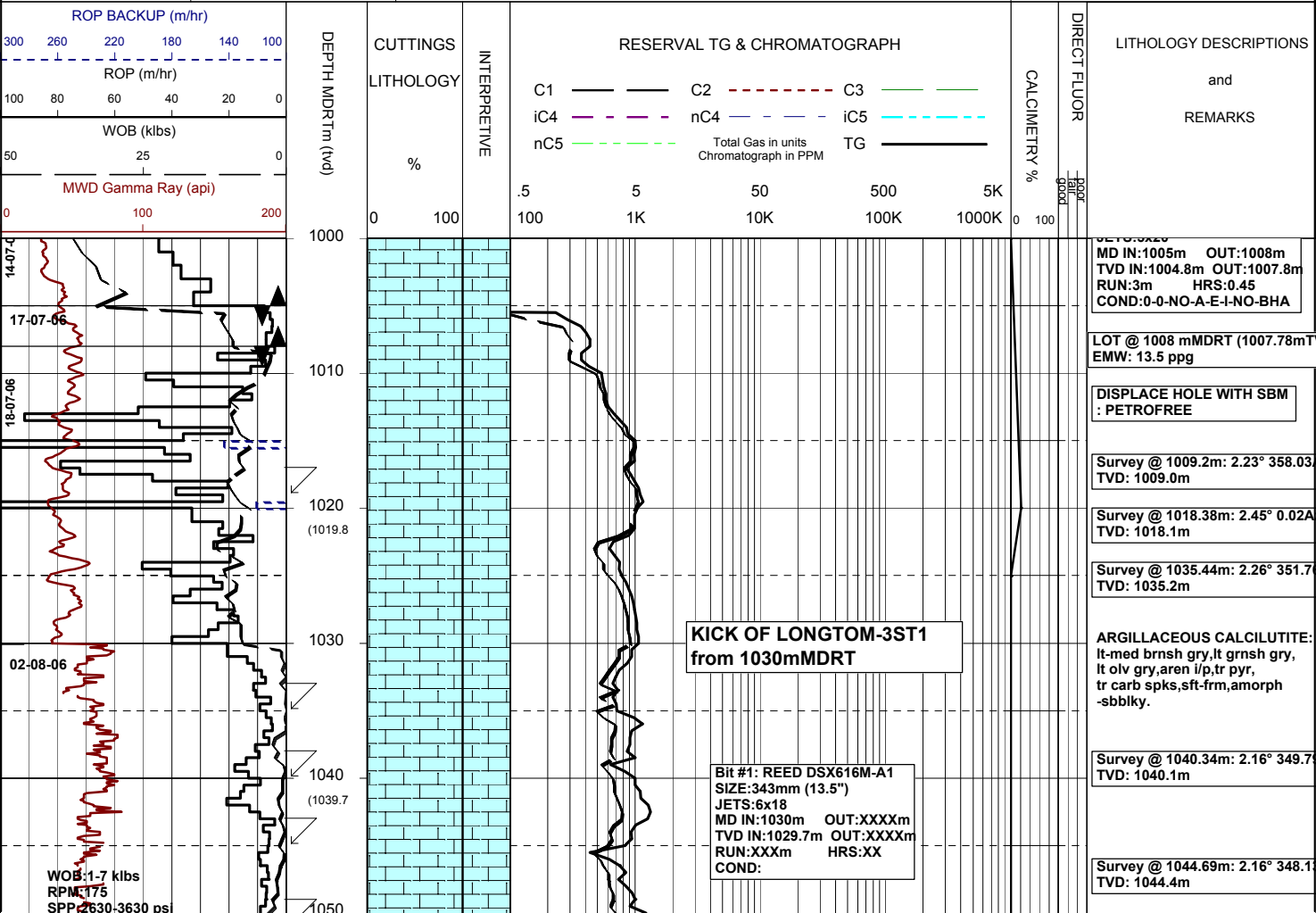


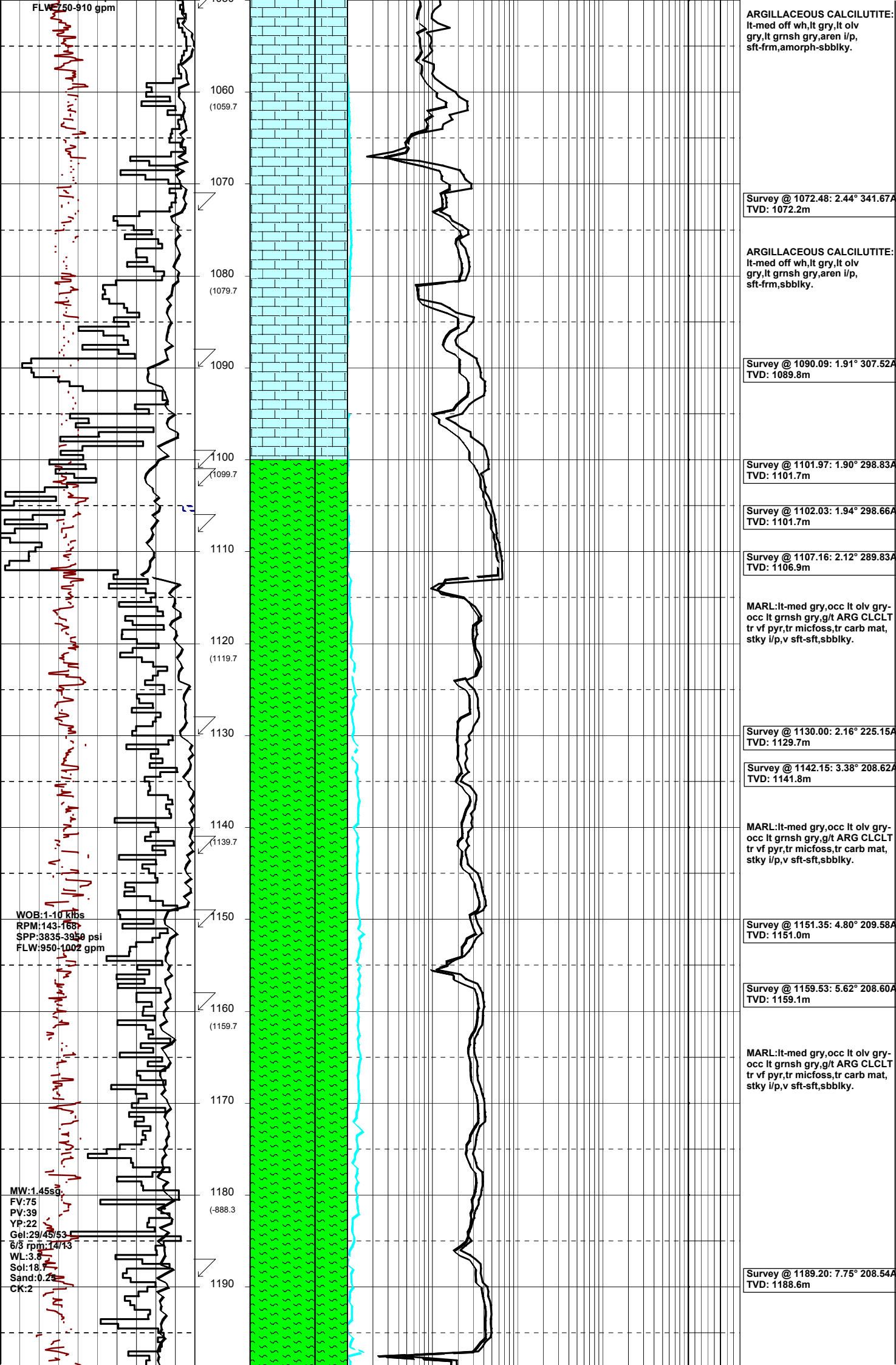
MASTERLOG LONGTOM-3ST1



GENERAL	POSITION	HOLE / CASING INFO	DATE / DEPTH	ENGINEERS
Country : AUSTRALIA Permit : VIC/P54 Field : LONGTOM Basin : GIPPSLAND Well Type : APPRAISAL Rig: OCEAN PATRIOT	Latitude : 38°05'34.63"S Longitude : 148°18'41.52"E UTM Co-ord X (m E): 615006 UTM Co-ord Y (m N): 5783059.3 RT to LAT (m): 21.5 RT to Sea Bed (m): 78.2	914mm(36") hole to: 111.8m 559mm(22") hole to: 1005m 241mm(9 1/2") hole to: m 762mm(30") Cond. to: 110.8m 406mm(16") Csg. to: 995.32m	Spud Date : 02-08-2006 Total Depth Date : XX-XX-2006 Total Depth (mMDRT): m True Vertical Depth (mTVDSS): m Log Scale : 1/ 500 Final Status : ??	T. N. KYAW A. DUNN D. ADDERLEY

ABBREVIATIONS	LITHOLOGY LEGEND	ENGINEERING LEGEND
<p>MW Mud Weight FV Funnel Viscosity PV Plastic Viscosity YP Yield Point Gel Gel Strength WL Water Loss KCl Potassium Chloride Cl Chlorides Incl Inclination Az Azimuth</p> <p>WOB Weight on Bit (klbs) RPM Rotations Per Min FLW Flow Rate (gpm) SPP Pump Pressure (psi) RR Re-Run Bit TG Trip Gas CG Connection Gas BG Background Gas DGP Drilled Gas Peak MM Mud Motor</p>	<p>Claystone Siltstone Shale Fine SST Medium SST Coarse SST</p> <p>Mari Clay, Limestone Limestone Dolomite Coal Volcanic</p> <p>Lithic Fragment Foraminifera Fossils Bryozoa Sponges Brachiopoda</p> <p>Cement Glauconite Pyrite Iron Minerals Mica Siderite</p>	<p>Shoe Deviation survey DST TEST Test Sidewall Core Core</p> <p>DOLOMITE RFT FIT Mud loss Mud gain</p>





ARGILLACEOUS CALCILUTITE:
 lt-med off wh,lt gry,lt olv
 gry,lt gmsh gry,aren i/p,
 sft frm,amorph-sbbiky.

Survey @ 1072.48: 2.44° 341.67A
 TVD: 1072.2m

ARGILLACEOUS CALCILUTITE:
 lt-med off wh,lt gry,lt olv
 gry,lt gmsh gry,aren i/p,
 sft frm,sbbiky.

Survey @ 1090.09: 1.91° 307.52A
 TVD: 1089.8m

Survey @ 1101.97: 1.90° 298.83A
 TVD: 1101.7m

Survey @ 1102.03: 1.94° 298.66A
 TVD: 1101.7m

Survey @ 1107.16: 2.12° 289.83A
 TVD: 1106.9m

MARL:lt-med gry,occ lt olv gry-
 occ lt gmsh gry,g/t ARG CLCLT
 tr vf pyr,tr micfoss,tr carb mat,
 stky i/p,v sft-sft,sbbiky.

Survey @ 1130.00: 2.16° 225.15A
 TVD: 1129.7m

Survey @ 1142.15: 3.38° 208.62A
 TVD: 1141.8m

MARL:lt-med gry,occ lt olv gry-
 occ lt gmsh gry,g/t ARG CLCLT
 tr vf pyr,tr micfoss,tr carb mat,
 stky i/p,v sft-sft,sbbiky.

Survey @ 1151.35: 4.80° 209.58A
 TVD: 1151.0m

Survey @ 1159.53: 5.62° 208.60A
 TVD: 1159.1m

MARL:lt-med gry,occ lt olv gry-
 occ lt gmsh gry,g/t ARG CLCLT
 tr vf pyr,tr micfoss,tr carb mat,
 stky i/p,v sft-sft,sbbiky.

Survey @ 1189.20: 7.75° 208.54A
 TVD: 1188.6m

WOB:1-10 klbs
 RPM:143-168
 SPP:3635-3950 psi
 FLW:950-1002 gpm

MW:1.45sg
 FV:75
 PV:39
 YP:22
 Gel:29/45/53
 6/3 rpm:14/13
 WL:3.8
 Sol:18.7
 Sand:0.2
 CK:2

